

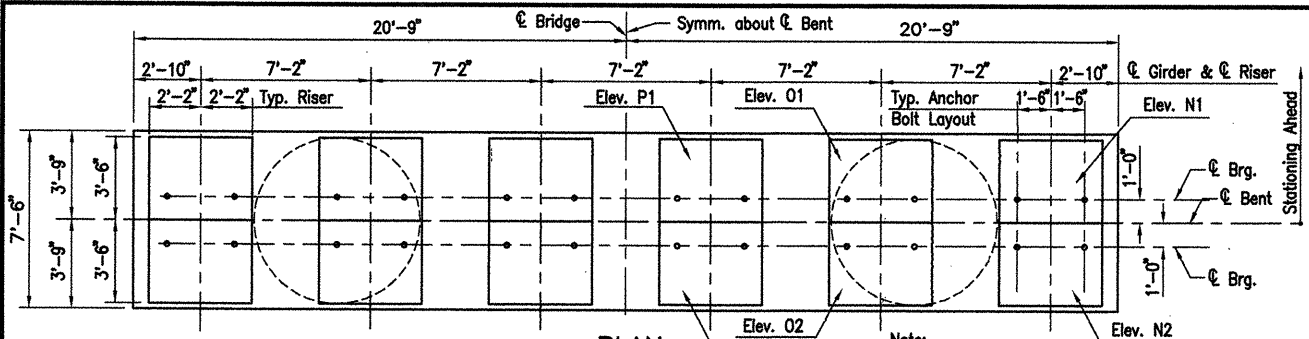
DATE REVISED	DATE FILMED	DATE REVISED	DATE FILMED	FED. ROAD NO.	STATE	FED. AID PROJ. NO.	SHEET NO.	TOTAL SHEETS
					ARK.			
				JOB NO.		110394	56	196
				06830	BENTS			41968

BAR LIST-PER BENT

Mark	No. Req'd	Length	'A'	'B'	P.D.	Bending Diagrams
B501	64	24'-10"	4'-9"	7'-2"	2 1/2"	Dimensions are out to out of bars.
B502	16	21'-3 1/2"	7'-2"	7'-2"	2 1/2"	
B601	30	10'-4"	6'-8"	2'-0"	4 1/2"	
B602	48	7'-8"	4'-0"	2'-0"	4 1/2"	
B603	26	41'-2"			Str.	
B1001	12	41'-2"			Str.	
B1002	12	44'-0"	41'-2"	11 1/2"	10"	
C601	2	G			Str.	
C1001	90	C	D	1'-9 1/2"	9"	
F801	144	6'-0"			Str.	
F1001	64	24'-10"	22'-0"	11 1/2"	10"	
F1002	90	18'-4"	15'-6"	11 1/2"	10"	
F1003	32	22'-0"			Str.	
F1004	46	15'-6"			Str.	

NOTES:

- All concrete shall be Class "S". All exposed corners to be chamfered 3/4" unless otherwise noted. All concrete shall be poured in the dry.
- All reinforcing steel shall conform to AASHTO M31 or M53, Gr.60.
- If anchor bolts are drilled into cap, top reinforcing bars shall be properly placed to avoid damage.
- For additional information, see Layout.
- Contractor has the option of placing a 7'-8" lap splice in the vertical leg of C1001 bars. The splice shall be in the middle half of the column height. This shall be included in "Reinforcing Steel - Bridge".



PLAN

Scale: 1/4" = 1'-0"

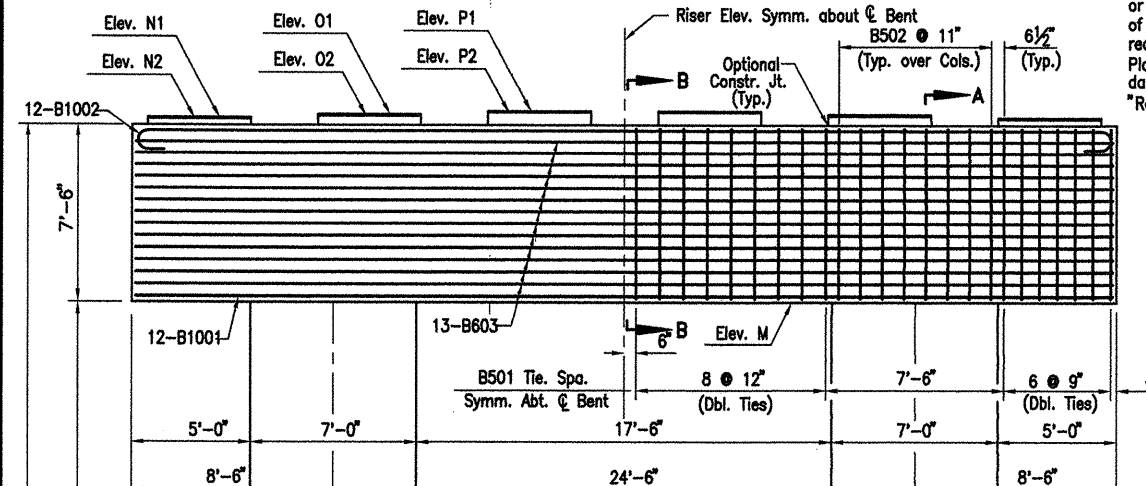
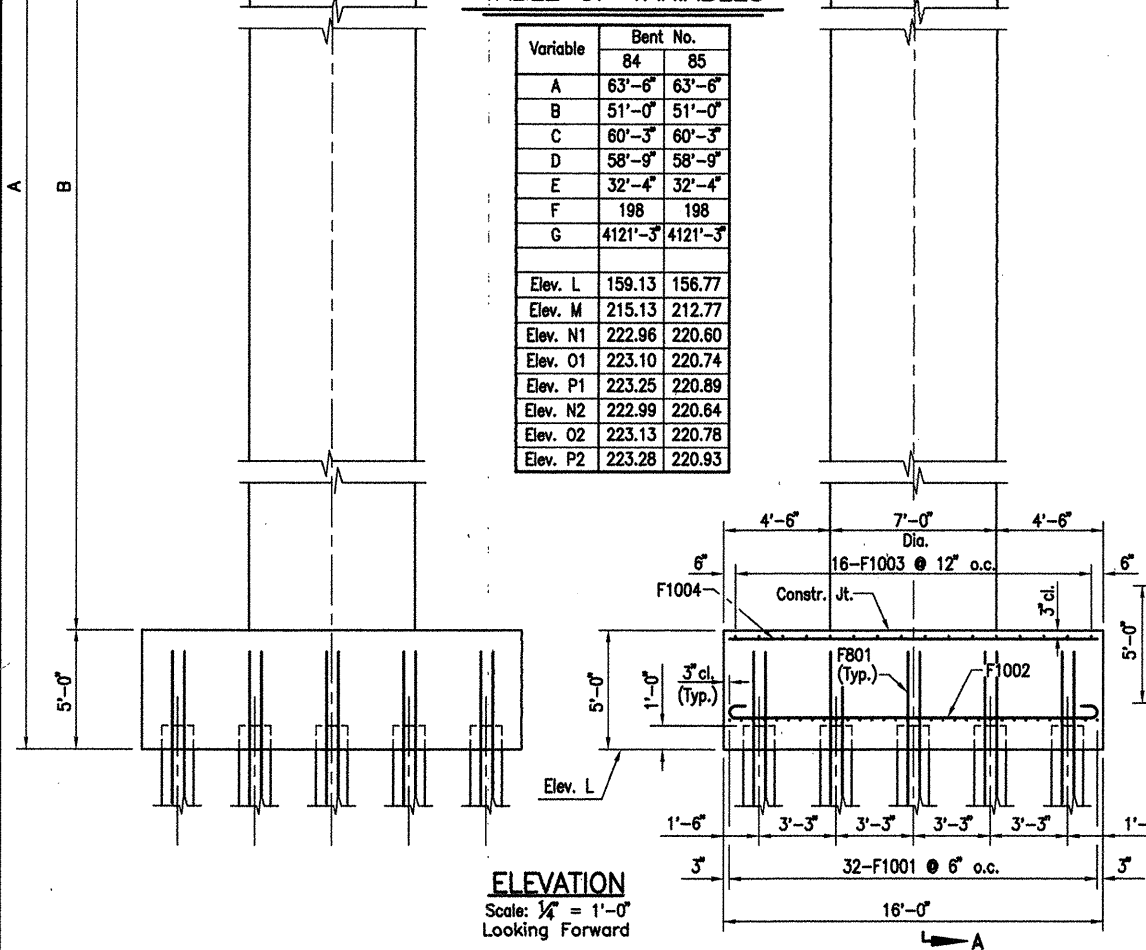


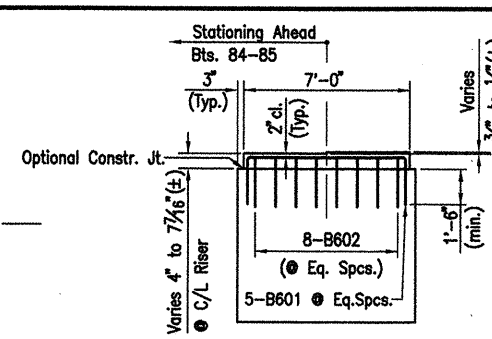
TABLE OF VARIABLES

Variable	Bent No.	84	85
A	63'-6"	63'-6"	
B	51'-0"	51'-0"	
C	60'-3"	60'-3"	
D	58'-9"	58'-9"	
E	32'-4"	32'-4"	
F	198	198	
G	4121'-3"	4121'-3"	
Elev. L	159.13	156.77	
Elev. M	215.13	212.77	
Elev. N1	222.96	220.60	
Elev. O1	223.10	220.74	
Elev. P1	223.25	220.89	
Elev. N2	222.99	220.64	
Elev. O2	223.13	220.78	
Elev. P2	223.28	220.93	



ELEVATION

Scale: 1/4" = 1'-0"
Looking Forward

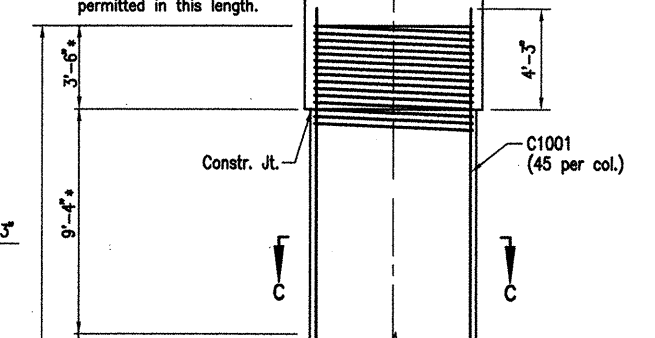


RISER DETAIL

Scale: 1/4" = 1'-0"

The riser reinforcing steel shall be placed with the bent cap reinforcing steel. The Contractor has the option to drill and grout the riser reinforcing steel at least 1'-6" into the cap using an approved non-shrink grout or an epoxy grout listed in the QPL. Diameter of holes and installation procedure shall be as recommended by the grout manufacturer. Place bent reinforcing properly to avoid damage. This work shall be paid under "Reinforcing Steel - Bridge".

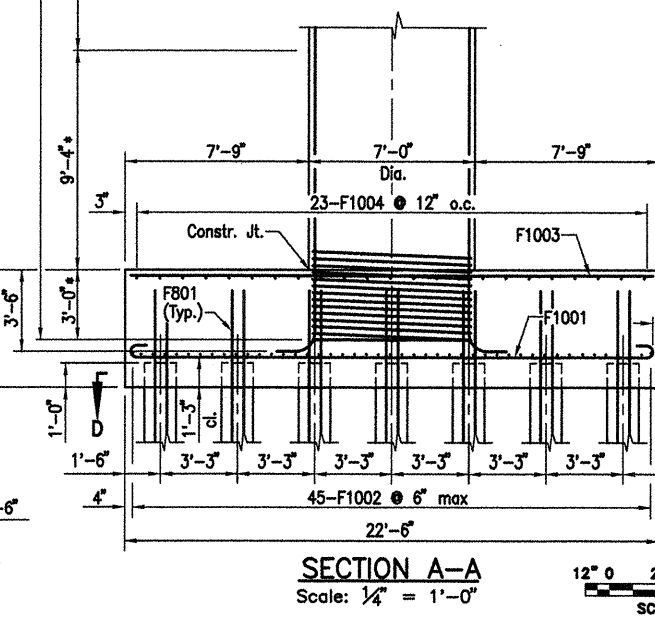
* - No lap splice of C601 permitted in this length.



NOTES FOR SPIRAL REINFORCING

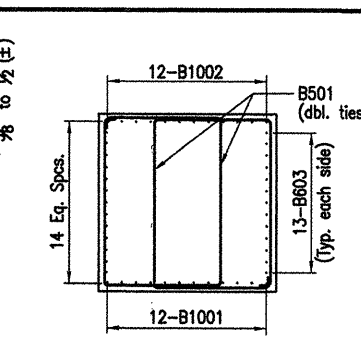
- Ends of spirals in footing and cap shall have 1 1/2 turns and terminate with a 135° hook and a 24" tail as shown in Bar List.
- Spiral reinforcement at splices of bars in the length designated as permissible for lap splices shall be terminated by a 135° hook with a 10" tail hooked around a vertical bar.
- Spiral reinforcement shall be plain round or deformed steel bars meeting the requirements of AASHTO M31 or M53 (Grade 60) or shall be cold drawn wire meeting the requirements of AASHTO M32 or M225 (Grade 70) with a minimum diameter of 0.75".
- Spiral reinforcement shall be paid for at the contract unit price bid per pound for "Reinforcing Steel - Bridge (Grade 60)". No additional payment shall be made for spacers, splices or bracing needed for assembly, shipping, handling or erecting.
- Lapped splices in spirals shall be lapped 80 bar diameters minimum.
- Adjust spiral pitch as needed to accommodate footing or cap bars.

C601 F Turns @ 3 1/2" Pitch
E - Lap Splice of 5'-0" in C601 is permitted in this zone



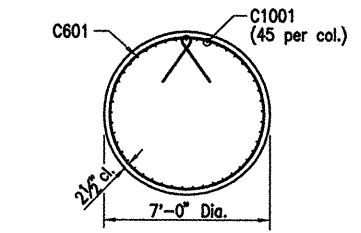
SECTION A-A

Scale: 1/4" = 1'-0"



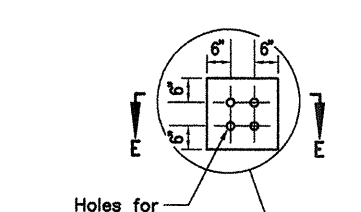
SECTION B-B

Scale: 1/4" = 1'-0"



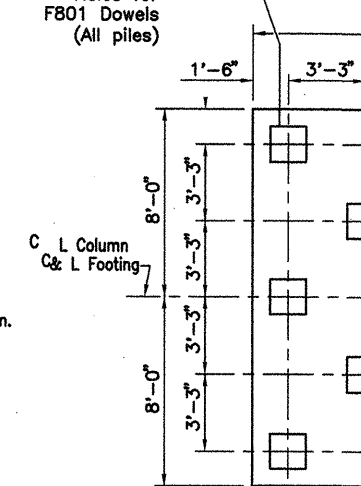
SECTION C-C

Scale: 1/4" = 1'-0"



SECTION D-D

Scale: 1/4" = 1'-0"



SECTION E-E

N.T.S.

Drill and grout F801 dowels 3'-0" into piles using an approved non-shrink grout or an epoxy grout listed on the QPL. Diameter of holes and grout listed on the QPL. Diameter of holes and installation procedure shall be as recommended by the grout manufacturer.

ALTERNATE NO. 1

DETAILS OF BENTS - WHITE RIVER
BENTS 84 - 85

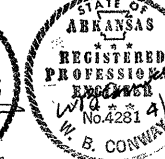
WHITE RIVER STR. & APPRS.
(CLARENDON) (PH II) (F)
MONROE COUNTY

ROUTE 79 SEC. 13

ARKANSAS STATE HIGHWAY COMMISSION
LITTLE ROCK, ARK.

Engstrom & Modjeski and Masters, Inc.

DRAWN BY: CJA DATE: Apr. 10 FILENAME: b1103941_b05
CHECKED BY: FS DATE: Nov. 07 SCALE: 1/4"=1'-0"
DESIGNED BY: BMH DATE: Nov. 01
BRIDGE NO. 06830 DRAWING NO. 41968



BRIDGE ENGINEER